



Effective Inventory & Warehouse Management

HRDF

www.zohlgroupp.com

COURSE CODE: H-SCM-01

LEVEL: Basic to Intermediate

LANGUAGE: Bahasa & English

OVERVIEW

In today's highly competitive and globalized market environment, Warehousing and Inventory plays a vital role in supporting the Demand Centric Supply Chain Management. They timely support the necessary resources (inputs) to production with near perfect Inventory Management System. Planning replenishing activities with timely monitoring the inbound goods and maintaining a proper storage system before moving to the next in-house processing i.e. conversion to finished goods. This training program aims to improve the competency of warehouse personnel with the necessary state-of-art knowledge and best-in-class methods to reduce and manage the warehouse operations cost efficiently and effectively.

OBJECTIVE

Upon completion of this program, participants will be able to:

- Understand the principles and purpose of Inventory Management and control in Supply Chain Management.
- Understand the Strategic functions of Warehouse and Inventory control - inbound and outbound to support Manufacturing operation along with the pull factors in Supply Chain Management
- Understand the Inventory valuation methods like ABC analysis, Inventory count and periodic Cycle counts.
- Understand the role of Inventory (Performance) in Customer Satisfaction and Retention in sustaining Benchmarks on Quality ,Cost and Delivery (QCD).
- Learn Facilities and Layout planning for cost efficiency storage ,retrieval handling and speedy processing
- Learn to manage the warehouse operation effectively to eliminate inventory obsolesces and redundant inventories.
- Maintenance of warehouse equipment/s that facilitate effective operations.

COURSE DURATION

2 days (9am—5pm)

Tea Breaks: 10:30am & 3:30pm

Lunch: 1:00pm-2:00pm

Note: Please contact our office for Training Date or visit our website for details (www.zohlgroupp.com)

METHODOLOGY

This program will be conducted with:

- Interactive Lectures using PowerPoint presentation
- Worksheets and Quiz
- Discussions
- Practical Exercise
- Case Study
- Video Presentation

TARGET AUDIENCE

- Logistic Supervisors and Clerical staffs
- Logistics Managers
- Logistics Engineers
- Supply Chain Managers

LOCATION

Mindset Discovery Center™@ZOHL, M2-6-08, Level 6, 8trium Tower 2, Bandar Sri Damansara, Kuala Lumpur (other Regions please contact our office)

COURSE CONTENT

WAREHOUSE ORGANIZATION

- Matrix Organization Structure
- Responsibilities defined.
- Warehouse and inventory Management Objectives and goals
- Functions of Warehouse
- Documentation Flow, licensing and Insurance
- Performance Measures and Reporting

INVENTORY LEVEL AND ACCURACY

- Classify SKU's and Monitor and Maintain Inventory accuracy
- Product Identification to Optimize monitoring
- Reduce errors and inefficiencies
- New security protocols for inventory tracking
- Periodic Inventory count and Stock / Cycle count
- Defect, reverse logistics and obsolete inventories

REORGANIZE THE FLOOR PLAN - SMOOTH FLOW

- Balancing the space - impact on forecasting, Lead-time variability, Volume etc.
- Changing buying pattern and behaviors, managing peaks, discount effects etc.
- Modify the floor plan to make it more efficient and speed flow process.
- Optimize space efficiency and to match new business model.
- Supply and Demand changes - sales growth - inventory exceeds capacity
- Space planning - with breakthroughs - JIT, Kanban, Cross Docking
- Improve the flow in entire warehouse and inventory tracking
- Space for sorting and consolidation of different goods
- Quarantine areas

QUALITY INVENTORY MANAGEMENT SOFTWARES

- Inventory Management solutions
- Real time updating and documentations
- Use of RFID for quick and accurate inventory
- Wave Picking and Cross -Docking (E-kanban) - lean operations
- IoT applications deployment and Big Data Analytic s of Inventory

EQUIPMENT MAINTENANCE

- Preventive maintenance procedures
- Competency in handling warehouse equipment and repairs
- Spare parts management
- Parking zone
- Fueling/charging spots

SAFETY AND ENVIRONMENT

- Identify hazard area
- Highlight exit points and mobility of equipment / Speed limit
- Pest control and hygiene
- Fire hazard and safety signs
- Security arrangement / Pedestrian pathway

Note: Course Content subject to further review

Customized In-House Training Program is available in the following areas:

Administrative Skills | Career Development | Human Resources | Personal Development | Sales & Marketing | Leadership & Management | Workplace Essentials | Entrepreneurship | Soft Skills | SCM | HSE | Engineering | Telecoms | IT

CALL US FOR DETAILS or VISIT OUR WEBSITE AT WWW.ZOHLGROUP.COM



Sebarang pertanyaan sila hubungi Cik Niesa

ZOHL Consultancy Sdn Bhd (332967-D)(SST ID:W10-1810-32000429)

M2-15-02, Level 15, 8trium Tower 2, Jalan Cempaka SD 12/5

Bandar Sri Damansara, 52200 Kuala Lumpur

T: 03.6279.9276 F: 03.6279.0663 HP: 013.398.1038 E: training@zohlgroupp.com



Effective Inventory & Warehouse Management

HRDF

www.zohlgroupp.com

COURSE FEE

RM1,272 per person incl. 6% SST
(Fee inclusive of Course Material, Attendance Certificate, and Meals)

CERTIFICATE

Participants will be issued a Certificate of Attendance/Accomplishment upon successful completion of this training program. Full attendance is a pre-requisite.

CIDB CCD Points

20 (for CIDB-Registered Companies) & upon approval from CIDB

HRDF SBL KHAS

Claimable under HRDF SBL KHAS Scheme (for Companies contributing to HRDF)

REGISTRATION METHOD

1. **Online:** http://zohlgroupp.com/hrdf_registration/ **OR**
2. Download this brochure at: <http://zohlgroupp.com/all-brochures/> and fill up the required information. Then please fax to: 03.6279.0663
3. Or contact our office at: 03.6279 9276 / 013.398.1038

FACILITATOR

Paramesvaran or RAM has more than 30 years experience in marketing, supply chain management, human resource management, lean & quality management, logistics, and inventory & warehouse management. He has the following academic qualifications:

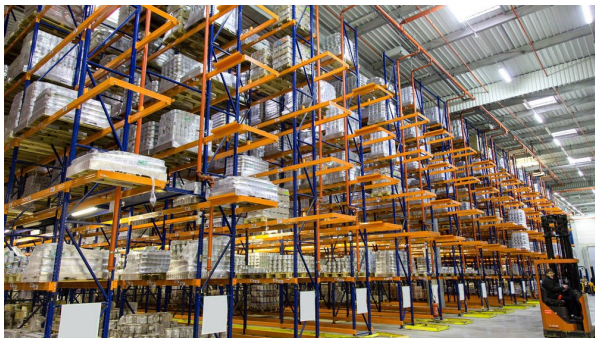


- Southampton Institute - B Eng (Hons) Business Engineering -1989
- Postgraduate Diploma in Marketing 1995 (Chartered Institute of Marketing)
- MSc Environmental Management (Malaysian University of Science and Technology) - 2007
- Master in Business Administration (Open University Malaysia) - 2010

He has also attended the following Professional Courses:

- Institute of Management Specialist (TQM) Associate Member
- Certified Training Professional ARTDO
- IRCA Certified Environmental Management System Auditor (SGS)
- PSMB Certified Trainer: TTT Certificate No: 4179

*Note: Trainer availability is subject to change



REGISTRATION FORM

Participant#1: _____

Position: _____

IC No: _____

Participant#2: _____

Position: _____

IC No: _____

Training Date: _____

Training Venue: _____

Organization: _____

Address: _____

Contact Person: _____

Position: _____

Tel: _____

Fax: _____

Email: _____

Company Website: _____

PAYMENT

CASH: RM _____ **OR**

CHEQUE No: _____

Please fax your bank-in slip to 03.6279.0663 or scan your bank-in slip and email to training@zohlgroupp.com

*Please make your cheque payable to:

ZOHL Consultancy Sdn Bhd



Account No:
514392303373

Signature & Company Stamp

Note:

- Date & venue of seminar subject to changes
- Payment must be made 7 days before the training date
- Registration cancelled 7 days prior to the event is subject to RM100 service charge per participant
- No refunds for notice received less than 7 days prior to the event. A substitution may be made at any time at no extra charge.
- Program content may change subject to revision by our consultants from time to time.
- Full fee is required with your registration. 5% Group discount is available - min 3 pax.

Customized In-House Training Program is available in the following areas:

Administrative Skills | Career Development | Human Resources | Personal Development | Sales & Marketing | Leadership & Management | Workplace Essentials | Entrepreneurship | Soft Skills | SCM | HSE | Engineering | Telecoms | IT

CALL US FOR DETAILS or VISIT OUR WEBSITE AT WWW.ZOHLGROUP.COM



Sebarang pertanyaan sila hubungi Cik Niesa

ZOHL Consultancy Sdn Bhd (332967-D)(SST ID:W10-1810-32000429)

M2-15-02, Level 15, 8trium Tower 2, Jalan Cempaka SD 12/5

Bandar Sri Damansara, 52200 Kuala Lumpur

T: 03.6279.9276 F: 03.6279.0663 HP: 013.398.1038 E: training@zohlgroupp.com